



## **Corrosion Data Management Software Version 3.1.3**

**Metal Samples Corrosion Monitoring Systems**

*A Division of Alabama Specialty Products, Inc.*

152 Metal Samples Road, Munford, AL 36268

Phone: 256-358-4202 Fax: 256-358-4515

E-mail: [msc@alspi.com](mailto:msc@alspi.com) Internet: [www.metalsamples.com](http://www.metalsamples.com)

**Houston Office:** 8811 Kensington Court, La Porte, TX 77571

Phone: 281-471-2777 Fax: 281-471-3405

# Table of Contents

|   |           |
|---|-----------|
| <b>Setup</b> .....                          | <b>1</b>  |
| System Requirements.....                    | 1         |
| Installing The Software.....                | 1         |
| Uninstalling The Software.....              | 2         |
| <b>Introduction</b> .....                   | <b>4</b>  |
| <b>Instrument Download Center</b> .....     | <b>5</b>  |
| Selecting A Serial Port.....                | 5         |
| Selecting An Instrument.....                | 6         |
| Downloading Data.....                       | 6         |
| Saving Data.....                            | 6         |
| Printing Data.....                          | 6         |
| Charting Data.....                          | 6         |
| <b>Data Analysis</b> .....                  | <b>7</b>  |
| Loading A Data File.....                    | 7         |
| Data Table.....                             | 7         |
| Printing Data.....                          | 8         |
| Creating A Chart.....                       | 8         |
| Printing A Chart.....                       | 8         |
| Exporting A Chart.....                      | 8         |
| Chart Tools.....                            | 8         |
| Statistical Data.....                       | 8         |
| Finding A Data Points Value.....            | 9         |
| The Tools Menu.....                         | 9         |
| <b>LPR Alloy Multiplier Worksheet</b> ..... | <b>11</b> |
| Calculating An Alloy.....                   | 11        |
| Saving A Worksheet.....                     | 11        |
| Add To Data File.....                       | 11        |
| Save To Text File.....                      | 12        |
| Printing A Worksheet.....                   | 12        |

|   |           |
|---|-----------|
| <b>Corrosion Coupon Worksheet</b> ..... | <b>13</b> |
| Calculating Corrosion Rate.....         | 13        |
| Unit Selection.....                     | 13        |
| Saving A Worksheet.....                 | 13        |
| Add To Data File.....                   | 13        |
| Save To Text File.....                  | 14        |
| Printing A Worksheet.....               | 14        |
| <b>Support</b> .....                    | <b>15</b> |
| <b>Warranty</b> .....                   | <b>16</b> |
| <b>License Agreement</b> .....          | <b>17</b> |

# Setup

This section will guide you through the process of installing the Corrosion Data Management Software on your PC. Before installation, make sure that you have read and accepted the License Agreement found in the back of this manual.

## System Requirements

To run the Corrosion Data Management Software, you need a PC that meets the following requirements:

- Pentium® class processor
- Windows® 95 or higher operating system
- 16 MB of RAM
- 10 MB of available hard-disk space
- VGA monitor with 800 × 600 or greater resolution
- Mouse or pointing device recommended
- Available 9-pin or 25-pin serial port (for instrument download)
- CD-ROM drive for software installation (software available on 3.5" diskettes by request)

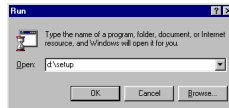
## Installing The Software

To install the Corrosion Data Management Software:

1. Remove any previous installations of the software.
2. Insert the setup disk. If the setup program starts automatically, you may proceed to step 6.
3. From the *Start* menu, select *Run*. The *Run* dialog box should appear.

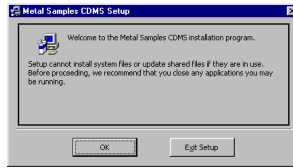


4. In the *Open* field, type "x:\setup" where 'x' is the letter of the CD-ROM drive containing the setup disk.

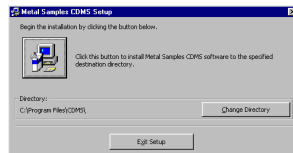


5. Click *OK*. The setup program should now start.

6. You will be prompted to close any open programs. After you have done so, click *OK* to continue.



7. You may change the directory that will contain the software by clicking the *Change Directory* button. To install the software in the default directory, click the *Install* button.



8. After clicking the *Install* button, the software will be installed on your PC. If any errors occur during software installation, you should uninstall, then reinstall the software.
9. When the software installation is complete you should remove the setup disk, then reboot your computer.

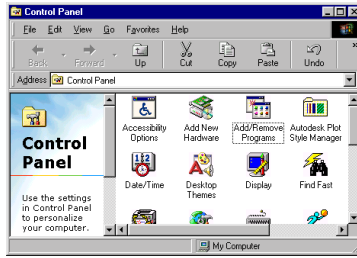
## Uninstalling The Software

To uninstall the software:

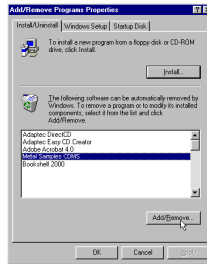
1. Open the Windows® Control Panel.



2. Open *Add/Remove Programs*.



3. Select "Metal Samples CDM5" from the list.

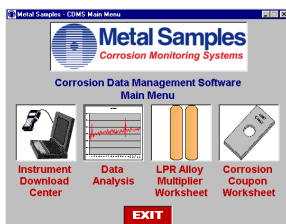


4. Click the *Add/Remove* button.
5. Follow the prompts.

# Introduction

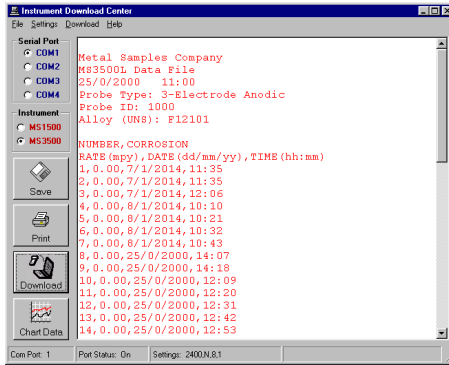
Metal Samples Corrosion Data Management Software (CDMS) is a collection of utilities designed to assist the corrosion analyst in gathering and analyzing corrosion data. It includes tools for downloading and charting data from Metal Samples data loggers, calculating LPR alloy multipliers for 2-electrode probes, and for calculating corrosion rate from corrosion coupons.

The Main Menu can be used to launch all of the utilities of the CDMS package. To close the program, click the EXIT button at the bottom of the Main Menu.



# Instrument Download Center

The Instrument Download Center is a simple tool for retrieving data from Metal Samples ER and LPR data logger instruments.



To download data from an instrument:

- Connect the instrument to an available PC serial port (see the instrument manual)
- Run the Corrosion Data Management Software
- Open the Instrument Download Center
- Select the serial port and instrument
- Click the *Download* button
- Select the computer upload function on the instrument

Data will begin to transfer from the instrument to the PC, and will appear in the data window of the Instrument Download Center. If the data appears garbled, the wrong instrument type has been selected. Select another instrument type and try again. If data does not appear in the data window at all, verify that:

- The instrument is connected to a valid serial port
- All cables are securely connected
- The message “Port Status: On” appears in the status bar
- There are no errors on the instrument

## Selecting A Serial Port

Use the *Serial Port* option box, or the *Serial Port* option in the *Settings* menu to select the port to which the instrument is connected.

## **Selecting An Instrument**

Use the *Instrument* option box, or the *Instrument* option in the *Settings* menu, to select the model of Metal Samples instrument being downloaded. This sets the appropriate communication parameters, which will be displayed in the status bar at the bottom of the window (“9600,N,8,I” for an MS1500, “2400,N,8,I” for an MS3500).

## **Downloading Data**

To toggle the selected port on and off, click the *Download* button, or click *Start/Stop* in the *Download* menu. Toggling the port on and off will also clear the data window.

Once a valid serial port and instrument have been selected, click the *Download* button to turn the port on and enable the computer to receive data. If a valid serial port has been selected, the status bar at the bottom of the window will display the message “Port Status: On”. If an invalid serial port has been selected, an error message will appear, and the status bar will display the message “Port Status: Off”. If this happens, another serial port should be selected.

## **Saving Data**

To save the data in the data window, click the *Save* button, or click *Save* in the *File* menu. The data is comma-delimited ASCII text. It can be saved to a standard text (.txt) file, or it can be saved to a comma-separated values (.csv) file, which greatly simplifies the process of importing the data into some spreadsheet programs such as Excel® or Quattro Pro®.

## **Printing Data**

To print the contents of the data window, click the *Print* button, or click *Print* in the *File* menu. A print dialog box will be displayed to allow printer selection and setup.

## **Charting Data**

To chart the contents of the data window, click the *Chart Data* button, or click *Chart Data* in the *File* menu. If the data has not yet been saved, the user will be prompted to do so before the charting process begins. For more information on charting data, see the Data Analysis section.

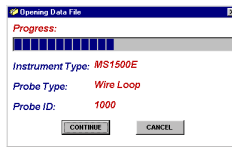
# Data Analysis

The Data Analysis utility is a convenient tool for charting data from Metal Samples ER and LPR data logger instruments. The Data Analysis utility can be opened from the Main Menu, or it can be opened directly from the Instrument Download Center.

If the Data Analysis utility is opened from the Instrument Download Center, the contents of the data window will be loaded into the chart. However, if the Data Analysis utility is opened directly from the Main Menu, a valid data file must be loaded. The *Select File* box will open to allow selection of a data file.

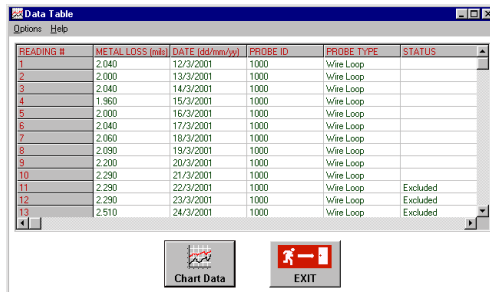
## Loading A Data File

After selecting a data file (or clicking the *Chart Data* button from the Instrument Download Center) a status window will display the progress of the file being opened, along with the Instrument Type, Probe Type, and Probe ID for the data file.



## Data Table

After a file has been successfully loaded, the data will be displayed in the Data Table for review. By default, all data points will be included in the chart. However, data points can be turned off, or excluded, from the chart. If the “Excluded” flag appears in the status column for a data point, that data point will not appear in the chart. To toggle the exclude/include status of a data point, double-click the data point, or select the data point and click *Exclude/Include* in the *Options* menu.



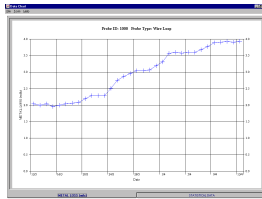
| READING # | METAL LOSS (min) | DATE (dd/mm/yy) | PROBE ID | PROBE TYPE | STATUS   |
|-----------|------------------|-----------------|----------|------------|----------|
| 1         | 2.040            | 12/3/2001       | 1000     | Wire Loop  |          |
| 2         | 2.000            | 13/3/2001       | 1000     | Wire Loop  |          |
| 3         | 2.040            | 14/3/2001       | 1000     | Wire Loop  |          |
| 4         | 1.960            | 15/3/2001       | 1000     | Wire Loop  |          |
| 5         | 2.000            | 16/3/2001       | 1000     | Wire Loop  |          |
| 6         | 2.040            | 17/3/2001       | 1000     | Wire Loop  |          |
| 7         | 2.060            | 18/3/2001       | 1000     | Wire Loop  |          |
| 8         | 2.090            | 19/3/2001       | 1000     | Wire Loop  |          |
| 9         | 2.200            | 20/3/2001       | 1000     | Wire Loop  |          |
| 10        | 2.290            | 21/3/2001       | 1000     | Wire Loop  |          |
| 11        | 2.290            | 22/3/2001       | 1000     | Wire Loop  | Excluded |
| 12        | 2.290            | 23/3/2001       | 1000     | Wire Loop  | Excluded |
| 13        | 2.210            | 24/3/2001       | 1000     | Wire Loop  | Excluded |

## Printing Data

The data table can be printed by clicking *Print* in the *Options* menu. A print dialog box will be displayed to allow printer selection and setup.

## Creating A Chart

To chart the selected data, click the *Chart Data* button, or select *Chart Data* from the *Options* menu. The chart will be displayed in a new window.



## Printing A Chart

A chart can be printed using the *Print Chart* option in the *File* menu. A print dialog box will be displayed to allow printer selection and setup.

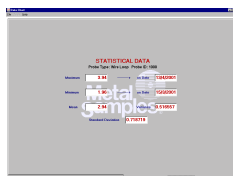
## Exporting A Chart

A chart can be exported to other applications using the *Copy Chart* option in the *File* menu. This will copy both the chart and the raw data to the Windows® Clipboard. The chart can then be inserted into other applications using the *Paste* function. Note: In some applications, using the *Paste* function will insert the raw data instead of the chart. In this case, use the *Paste Special* function, then select *Picture* to insert the chart.

## Chart Tools

- **Statistical Data**

The *Statistical Data* tab at the bottom of the Data Chart window will display a page with statistical information about the chart data. If the *Statistical Data* page is visible, this information can be printed by clicking *Print Statistical Data* in the *File* menu.



- **Finding A Data Points Value**

While viewing the chart, the value of any data point can be determined by simply clicking it. The value will be displayed in the charts tool-tip box (a small text box that is displayed near the mouse pointer). If the tool-tip box does not appear immediately after clicking the data point, hold the mouse pointer stationary over the chart background for a moment.

- **The Tools Menu**

The *Tools* menu contains a collection of utilities for viewing and manipulating the chart. The *Tools* menu can be accessed by clicking *Tools* on the menu bar, or by right-clicking anywhere on the chart.



|                          |        |
|--------------------------|--------|
| Hide Data Markers        | Ctrl+D |
| Show Mean Value          | Ctrl+M |
| Show Trend Line          | Ctrl+T |
| Title/Footnote Setup     |        |
| Plot Setup               | Ctrl+F |
| Data Series Color        | Ctrl+Q |
|                          | Ctrl+L |
| Zoom In                  | F5     |
| Zoom Out                 | F6     |
| Calculate Corrosion Rate | F7     |

- **Data Markers**

*Show Data Markers* toggles the data markers on and off.

- **Mean Value**

*Show Mean Value* toggles the mean value line on and off.

- **Trend Line**

*Show Trend Line* toggles the trend line on and off.

- **Title/Footnote Setup**

*Title/Footnote Setup* displays a window that allows the chart title and footnotes to be toggled on and off, and to be modified.

- **Plot Setup**

*Plot Setup* displays a window that allows configuration of Y-axis scaling, and of the chart type.

The Y-axis can be scaled to default values by checking the *Auto Scaling* option box. The Y-axis can be scaled to manual values by un-checking the *Auto Scaling* box, then entering the desired values in the *Minimum* and *Maximum* fields.

The chart type can be set to *Line Chart*, *Bar Chart*, or *Area Chart* by selecting the appropriate button in the *Chart Type* box. The default chart type is *Line Chart*.

- **Data Series Color**

*Data Series Color* displays a color selection box, which allows the user to select the brush color for the plot line. The default color for the plot line is Blue.

- **Zoom In**

*Zoom In* allows a region of the chart to be enlarged so that it may be viewed in greater detail. To enlarge a region of the chart, click on the two data points that define the left and right boundaries of the region.

In zoom mode, the mouse pointer will change to a cross-hair. When zoom mode ends, the mouse pointer will return to its normal state.

To cancel zoom mode, click *Cancel Zoom In* from the *Tools* menu, or simply press the *Esc* key.

- **Zoom Out**

*Zoom Out* restores the initial view of the chart, which displays the full data set.

- **Calculate Corrosion Rate**

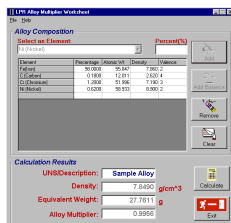
If the chart contains ER data, the *Calculate Corrosion Rate* option will become available under the *Tools* menu. This option allows the corrosion rate to be calculated between any two data points on the chart. To calculate the corrosion rate click *Calculate Corrosion Rate*, then click two data points. The corrosion rate between those two data points will be displayed.

In calculate mode, the mouse pointer will change to an arrow/question mark. When calculate mode ends, the mouse pointer will return to its normal state.

To cancel a calculation, click *Cancel Calculate* from the *Tools* menu, or simply press the *Esc* key.

# LPR Alloy Multiplier Worksheet

The LPR Alloy Multiplier Worksheet simplifies the process of calculating alloy multipliers for use with the 2-Electrode LPR system.



## Calculating An Alloy

To calculate an alloy multiplier, the alloy must be “built” by adding each of its elements to the *Alloy Composition* list. An element is added to the list by selecting it from the drop-down menu, entering its percentage in the *Percentage* field, then clicking the *Add* button. To add the remaining percentage to an element, select that element, then click the *Balance* button. If it is necessary to remove an element from the list, highlight that element in the list, then click the *Remove* button.

After all of the elements for an alloy have been entered, click the *Calculate* button to calculate the alloy multiplier. The *Alloy Multiplier* will be displayed in the *Calculation Results* box, along with the *Equivalent Weight* and *Density* for the alloy. If desired, an identification number or description can be entered into the *UNS/Description* field.

## Saving A Worksheet

The *File* menu offers two options for saving a worksheet.

- **Add to Data File**

*Add to Data File* can be used to save data from multiple worksheets as entries in a data file, which can be opened by spreadsheet programs such as Excel<sup>®</sup> or Quattro Pro<sup>®</sup>. The *Save As* dialog box will be displayed to allow selection of a file name. If an existing file name is selected, the data from the worksheet will be saved as a new entry in that data file. If the file name specified does not exist, a new file will be created with that name, and the worksheet data will be saved as the first entry in the new file.

- **Save to Text File**

*Save to Text File* can be used to save an individual worksheet. The *Save As* dialog box will be displayed to allow selection of a file name and file location. The worksheet will be saved using the file name and location specified, and can be opened using any text editor or word processor.

**Printing A Worksheet**

A worksheet can be printed using the *Print* option in the *File* menu. A print dialog box will be displayed to allow printer selection and setup.

# Corrosion Coupon Worksheet

The Corrosion Coupon Worksheet is a simple, step-by-step method for calculating metal loss and corrosion rate from corrosion coupons.

| Coupon Configuration |                        | Exposure Data       |                            |
|----------------------|------------------------|---------------------|----------------------------|
| Coupon Type          | Sequence #             | Installation        |                            |
| 111                  | 1234                   | Date(dd/mm/yy)      | Time(hh:mm)                |
| Alloy                | Alloy Density          | 11/4/2001           | 13.14                      |
| C1010                | 7.87 g/cm <sup>3</sup> | Removal             |                            |
| Shape                | Number of Holes        | Date(dd/mm/yy)      | Time(hh:mm)                |
| Rectangle            | 2                      | 11/5/2001           | 20.33                      |
| Hole Diameter        | Length                 | Weight              |                            |
| 0.792 cm             | 7.303 cm               | Initial             | Final                      |
| Width                | Thickness              | 20.32 g             | 18.7 g                     |
| 2.223 cm             | 0.3175 cm              | Result              |                            |
| Calculate            |                        | Surface Area        | 36.5475 sq cm              |
| Print                |                        | Total Exposure      | 727.32 hours               |
| Clear                |                        | Metal Loss          | 0.0563 mm                  |
|                      |                        | Corrosion Rate      | 0.6784 mm per year (mm/yr) |
|                      |                        | Comments            |                            |
|                      |                        | Exposed to 5% H2SO4 |                            |

## Calculating Corrosion Rate

To calculate the corrosion rate of a coupon, enter the requested information in the *Coupon Configuration* and *Exposure Data* boxes, then click the *Calculate* button. The calculated *Surface Area*, *Total Exposure*, *Metal Loss*, and *Corrosion Rate* will be displayed in the *Results* box. Any comments or special information can be entered in the *Comments* field.

Many standard Metal Samples coupons are listed in the *Coupon Type* menu. When using one of these coupons, its dimensions can be entered automatically by selecting it from the list. If the coupon being calculated is not found in the list, select *Other*, then enter the coupon dimensions manually.

To reset the worksheet, click the *Clear* button, or click *Clear* in the *Project* menu.

## Unit Selection

The measurement units for *Density*, *Dimensions*, *Metal Loss/Corrosion Rate*, and *Weight* can all be configured independently using the *Units* option in the *Project* menu.

## Saving A Worksheet

The *File* menu offers two options for saving a worksheet.

- **Add To Data File**

*Add to Data File* can be used to save data from multiple

worksheets as entries in a data file, which can be opened by spreadsheet programs such as Excel<sup>®</sup> or Quattro Pro<sup>®</sup>. The *Save As* dialog box will be displayed to allow selection of a file name. If an existing file name is selected, the data from the worksheet will be saved as a new entry in that data file. If the file name specified does not exist, a new file will be created with that name, and the worksheet data will be saved as the first entry in the new file.

- **Save To Text File**

*Save to Text File* can be used to save an individual worksheet as a text file. The *Save As* dialog box will be displayed to allow selection of a file name and file location. The worksheet will be saved using the file name and location specified, and can be opened using any standard text editor or word processor.

### **Printing A Worksheet**

A worksheet can be printed using the *Print* button, or the *Print* option in the *File* menu. A print dialog box will be displayed to allow printer selection and setup.

## Support

While every effort has been made to ensure this software product is free from defects, problems may still occur during its use. If you do encounter a problem while using this product, follow these steps to resolve it.

1. Make sure your computer meets the *System Requirements* listed in the *Setup* section of this manual.
2. Visit the Metal Samples web site and search the FAQ's page (<http://www.alspi.com/cdmsfaq.htm>). Your problem, and a solution, may already be posted there.
3. Visit the Metal Samples web site to see if there is a software update available. Software updates, and a list of the problems they fix, will be posted at <http://www.alspi.com/cdmsupdate.htm>. If an update is available, follow the directions on the web page to download and install it.
4. If your problem has not been addressed on the FAQ's page, or in a software update, use the support request form on the Metal Samples CDMS web page (<http://www.alspi.com/cdms.htm>) to request support for your problem. Please provide as much information as possible when describing your problem, and remember to complete the entire form. Your problem will be addressed as quickly as possible.

## **Warranty**

THE CORROSION DATA MANAGEMENT SOFTWARE (SOFTWARE PRODUCT) IS PROVIDED "AS IS," WITHOUT WARRANTY OF ANY KIND.

METAL SAMPLES CORROSION MONITORING SYSTEMS DISCLAIMS ALL OTHER WARRANTIES AND CONDITIONS, EITHER EXPRESS OR IMPLIED, INCLUDING, BUT NOT LIMITED TO, IMPLIED WARRANTIES OF MERCHANTABILITY, FITNESS FOR A PARTICULAR PURPOSE, TITLE AND NON-INFRINGEMENT, WITH REGARD TO THE SOFTWARE PRODUCT, AND THE PROVISION OF OR FAILURE TO PROVIDE SUPPORT SERVICES. THIS LIMITED WARRANTY GIVES YOU SPECIFIC LEGAL RIGHTS. YOU MAY HAVE OTHERS, WHICH VARY FROM STATE/JURISDICTION TO STATE/JURISDICTION.

IN NO EVENT SHALL METAL SAMPLES CORROSION MONITORING SYSTEMS BE LIABLE FOR ANY SPECIAL, INCIDENTAL, INDIRECT, OR CONSEQUENTIAL DAMAGES WHATSOEVER (INCLUDING, WITHOUT LIMITATION, DAMAGES FOR LOSS OF BUSINESS PROFITS, BUSINESS INTERRUPTION, LOSS OF BUSINESS INFORMATION, OR ANY OTHER PECUNIARY LOSS) ARISING OUT OF THE USE OF OR INABILITY TO USE THE SOFTWARE PRODUCT OR THE PROVISION OF OR FAILURE TO PROVIDE SUPPORT SERVICES, EVEN IF METAL SAMPLES CORROSION MONITORING SYSTEMS HAS BEEN ADVISED OF THE POSSIBILITY OF SUCH DAMAGES.

# License Agreement

**IMPORTANT--READ CAREFULLY:** This End-User License Agreement is a legal agreement between you (either an individual or a single entity) and Metal Samples Corrosion Monitoring Systems for the Corrosion Data Management Software (SOFTWARE PRODUCT). By installing or otherwise using the SOFTWARE PRODUCT, you agree to be bound by the terms of this agreement. If you do not agree to the terms of this agreement, do not install or use the SOFTWARE PRODUCT.

## SOFTWARE PRODUCT LICENSE

The SOFTWARE PRODUCT is protected by copyright laws and international copyright treaties, as well as other intellectual property laws and treaties. The SOFTWARE PRODUCT is licensed, not sold.

1. GRANT OF LICENSE. This agreement grants you the following rights:
  - 1.1 Software Product. Metal Samples Corrosion Monitoring Systems grants to you as an individual, a personal, nonexclusive license to use the SOFTWARE PRODUCT for the sole purposes of downloading and plotting corrosion data from data logger instruments purchased from Metal Samples Corrosion Monitoring Systems, and for calculating corrosion rate from corrosion coupons.
  - 1.2 Storage/Network Use. You may also store or install a copy of the SOFTWARE PRODUCT on a storage device, such as a network server, used only to install or run the SOFTWARE PRODUCT on your other computers over an internal network.
  - 1.3 You may not redistribute this SOFTWARE PRODUCT without prior permission from Metal Samples Corrosion Monitoring Systems.
  - 1.4 You may not sell this SOFTWARE PRODUCT.
2. DESCRIPTION OF OTHER RIGHTS AND LIMITATIONS.
  - 2.1 Limitations on Reverse Engineering, Decompilation, and Disassembly. You may not reverse engineer, decompile, or disassemble the SOFTWARE PRODUCT.
  - 2.2 Rental. You may not rent, lease, or lend the SOFTWARE PRODUCT.
  - 2.3 Support Services. At their discretion, Metal Samples Corrosion Monitoring Systems may provide you with limited support services related to the SOFTWARE PRODUCT.
  - 2.4 Termination. Without prejudice to any other rights, Metal Samples Corrosion Monitoring Systems may terminate this agreement if you fail to comply with the terms and conditions of this agreement. In such event, you must destroy all copies of the SOFTWARE PRODUCT and all of its component parts.
3. COPYRIGHT. All title and copyrights in and to the SOFTWARE PRODUCT are owned by Metal Samples Corrosion Monitoring Systems. The SOFTWARE PRODUCT is protected by copyright laws and international treaty provisions. Therefore, you must treat the SOFTWARE PRODUCT like any other copyrighted material.
4. U.S. GOVERNMENT RESTRICTED RIGHTS. The SOFTWARE PRODUCT and documentation are provided with RESTRICTED RIGHTS. Use, duplication, or disclosure by the Government is subject to restrictions as set forth in

subparagraph (c)(1)(ii) of the Rights in Technical Data and Computer Software clause at DFARS 252.227-7013 or subparagraphs (c)(1) and (2) of the Commercial Computer Software-Restricted Rights at 48 CFR 52.227-19, as applicable.

5. EXPORT RESTRICTIONS. You agree that neither you nor your customers intend to or will, directly or indirectly, export or transmit the SOFTWARE PRODUCT to any country to which such export or transmission is restricted by any applicable U.S. regulation or statute, without the prior written consent, if required, of the Bureau of Export Administration of the U.S. Department of Commerce, or such other governmental entity as may have jurisdiction over such export or transmission.