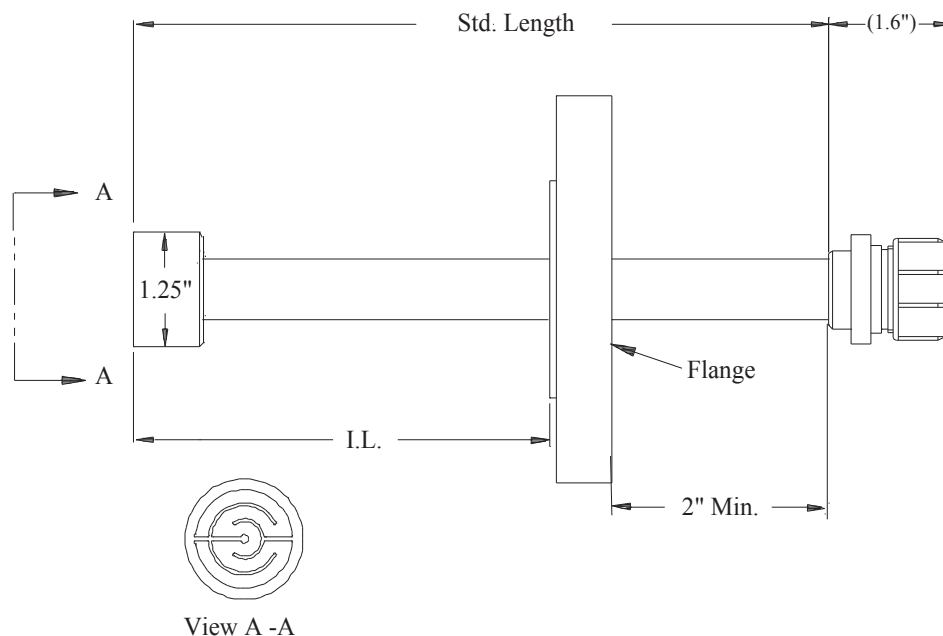


# Model ER6200

## Electrical Resistance Probe Fixed Length with Flange and Flush Element



**Model ER6200** is a fixed-length, flange-mounted, electrical resistance probe. The probe is ideally suited for use in high pressure and/or hazardous applications where threaded fittings are not available or not recommended. Process shutdown or process isolation is required to install and inspect. The all-welded construction allows the probe to be used in harsh environments. The probe assembly consists of an insertion rod with an element, a hermetically sealed connector, and a flange (as specified by customer), which are all welded in place. A mechanical seal can be added if required. The insertion length (I.L.) is calculated to the end of the element. Probe length can be specified by the customer. For standard probes, the maximum insertion length is given in the chart below and, in this case, is based on a 1" total flange thickness. Several standard elements are available to meet your specific needs.

### Specifications:

**Probe Body** - 316 Stainless Steel

**Element Seal** - Epoxy

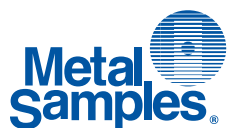
**Fill Material** - Epoxy

**Temperature Rating** - 500°F / 260°C

**Pressure Rating** - According to Flange Rating

**Mounting** - Mating Flange

Std. Length	IL (max)
8"	5"
12"	9"
18"	15"
24"	21"



### Metal Samples Company

A Division of Alabama Specialty Products, Inc.

152 Metal Samples Rd., Munford, AL 36268 Phone: (256) 358-4202 Fax: (256) 358-4515

E-mail: [msc@alspi.com](mailto:msc@alspi.com) Internet: [www.metalsamples.com](http://www.metalsamples.com)

Houston Office: 6327 Teal Mist Lane, Fulshear, TX 77441 Phone: (832) 451-6825

## ER6200 Ordering Information

Model								
ER6	Electrical Resistance Fixed Length Probe with Flange							
	<b>Flange Size</b>							
	2	1 1/2" Flange						
	3	2" Flange						
	4	3" Flange						
	5	4" Flange						
	7	6" Flange						
	<b>Probe Body Material</b>							
	22	316						
	44	C276						
	<b>ER Element Options</b>							
	C	FL05 Flush Mount - 5 mil thickness (2.5 mil useful probe life)						
	D	FL10 Flush Mount - 10 mil thickness (5 mil useful probe life)						
	E	FL20 Flush Mount - 20 mil thickness (10 mil useful probe life)						
	F	FL40 Flush Mount - 40 mil thickness (20 mil useful probe life)						
	<b>Flange Pressure Rating</b>							
	13	150 lbs.						
	23	300 lbs.						
	33	600 lbs.						
	43	1200 lbs.						
	53	1500 lbs.						
	63	900 lbs.						
	<b>Length</b>							
	08	5 inches max. insertion length						
	12	9 inches max. insertion length						
	18	15 inches max. insertion length						
	24	21 inches max. insertion length						
	<b>Element Alloy</b>							
	XXX	Use Code in Alloy Chart						
	<b>ER Probe Options</b>							
	00	No shield						
<b>ER6</b>	<b>2</b>	<b>22</b>	<b>C</b>	<b>13</b>	<b>08</b>	<b>375</b>	<b>00</b>	<b>Example of Probe Ordering #</b>

For alloys, sizes, or other special requirements not listed, contact our sales department.

Alloy Chart					
Code	Description	UNS #	Code	Description	UNS #
375	Carbon Steel *	G10100	159	316L SS	S31603
538	5Cr 1/2Mo	K42544	A12	C276	N10276
541	9Cr 1Mo	K90941	602	Alloy 625	N06625
186	410 SS	S41000	419	CDA110	C11000
141	304 SS	S30400	434	CDA443	C44300

Note: Not all alloys are available with all element types and seals.

\* Chemically equivalent to standard pipe-grade carbon steels.