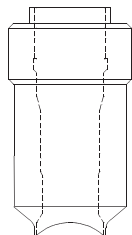
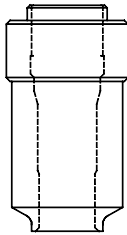


HP™ Access Fitting Bodies

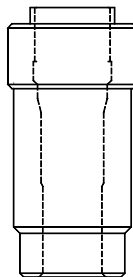
Non-Tee Types



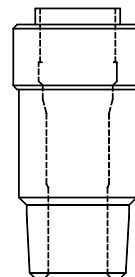
Model HP1000
Flareweld



Model HP2000
Butt weld

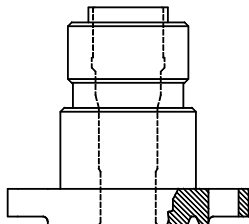


Model HP3000
Socket weld

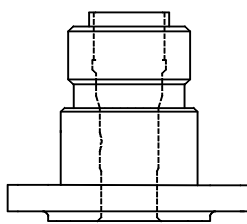


Model HP4000
NPT

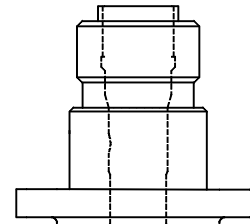
Model	Height (in)	Weight (lbs)
HP1000 Flareweld	5.25	5.5
HP2000 Butt weld	5.25	4.5
HP3000 Socket weld	6.25	4.5
HP4000 NPT	6.25	4.5



Model HP5000
ANSI Flange RJ



Model HP6000
ANSI Flange RF



Model HP7000
API Flange

Flange Size	Height (in)	Weight (lbs)
150#	5.25	10.50
300#	5.25	11.50
4/600#	6.25	15.25
9/1500#	6.25	30.75
2500#	6.25	40.00

Temperature Rating: -20° F (28.9° C) to +350° F (176.6° C)
Pressure Rating: 6000 PSI or as Flange Size

Metal Samples Corrosion Monitoring Systems

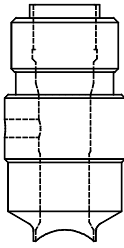
A Division of Alabama Specialty Products, Inc.

152 Metal Samples Rd., Munford, AL 36268 Phone: (256) 358-4202 Fax: (256) 358-4515

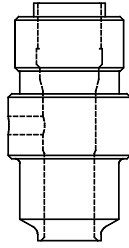
E-mail: msc@alspi.com Internet: www.metalsamples.com

Houston Office: 6327 Teal Mist Lane, Fulshear, TX 77441 Phone: (832) 451-6825

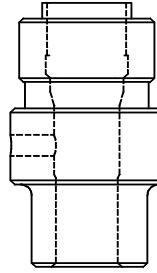
Tee Types



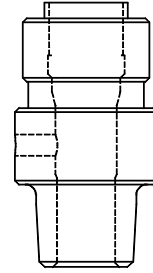
Model HP1100
Flareweld



Model HP2100
Buttweld

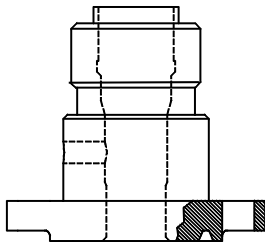


Model HP3100
Socketweld

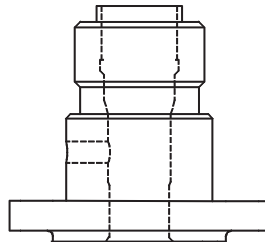


Model HP4100
NPT

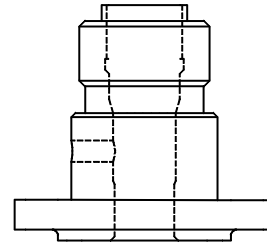
1/4" T		1/2" T		3/4" T		1" T	
Height (in)	Weight (lbs)	Height (in)	Weight (lbs)	Height (in)	Weight (lbs)	Height (in)	Weight (lbs)
5.25	4.5	6.25	5.75	6.25	6.5	7.25	7



Model HP5100
ANSI Flange RJ



Model HP6100
ANSI Flange RF



Model HP7100
API Flange

Model	Flange Size	1/4" T		1/2" T		3/4" T		1" T	
		Height (in)	Weight (lbs)	Height (in)	Weight (lbs)	Height (in)	Weight (lbs)	Height (in)	Weight (lbs)
HP5100 ANSI Flange RJ	150#	5.25	9.50	7.25	10.00	7.25	10.00	7.25	10.50
	300#	5.25	11.50	7.25	11.75	7.25	12.00	7.25	12.00
	4/600#	6.25	12.75	7.25	13.00	7.25	13.00	7.25	13.00
	9/1500#	6.25	25.75	8.25	26.00	8.25	26.25	8.25	26.50
	2500#	6.25	40.20	8.25	40.50	8.25	40.40	8.25	40.75
HP6100 ANSI Flange RF	150#	5.25	9.75	7.25	10.00	7.25	13.00	7.25	13.00
	300#	5.25	11.50	7.25	11.75	7.25	17.00	7.25	17.00
	4/600#	6.25	12.75	7.25	13.00	7.25	18.00	7.25	18.00
	9/1500#	6.25	25.75	8.25	26.00	8.25	38.00	8.25	38.00
	2500#	6.25	40.10	8.25	40.50	8.25	45.50	8.25	45.50
HP7100 API Flange	2000#	6.25	15.75	7.25	18.00	7.25	18.00	7.25	18.00
	3/5000#	6.25	31.00	8.25	38.00	8.25	38.00	8.25	38.00
	10000#	6.25	40.50	8.25	45.50	8.25	45.50	8.25	45.50

Temperature Rating: -20° F (28.9° C) to +350° F (176.6° C)

Pressure Rating: 6000 PSI or as Flange Size