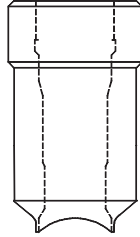
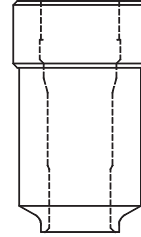


MH™ Access Fitting Bodies

Non-Tee Types

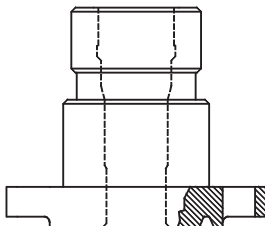


Model MH1000
Flareweld

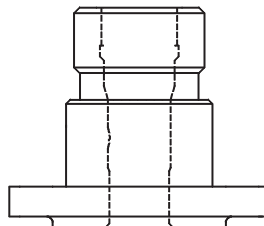


Model MH2000
Buttweld

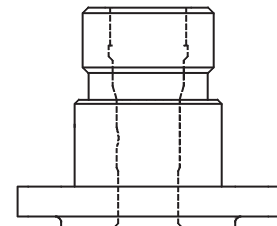
Model	Height (in)	Weight (lbs)
MH1000 Flareweld	5.5	7
MH2000 Buttweld	5.5	7



Model MH5000
ANSI Flange RJ



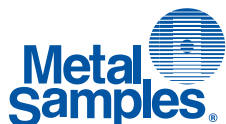
Model MH6000
ANSI Flange RF



Model MH7000
API Flange

2" Flange Size	Height (in)	Weight (lbs)
150#	5.5	11
300#	5.5	13
4/600#	5.5	14
9/1500#	5.5	27
2500#	5.5	42

Temperature Rating: -20° F (-28.9° C) to +350° F (176.6° C)
Pressure Rating: 6000 PSI or as Flange Size



Metal Samples Company

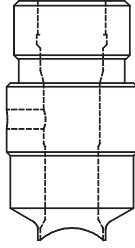
A Division of Alabama Specialty Products, Inc.

152 Metal Samples Rd., Munford, AL 36268 Phone: (256) 358-4202 Fax: (256) 358-4515

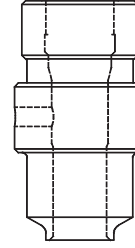
E-mail: msc@alspi.com Internet: www.metalsamples.com

Houston Office: 6327 Teal Mist Lane, Fulshear, TX 77441 Phone: (832) 451-6825

Tee Types

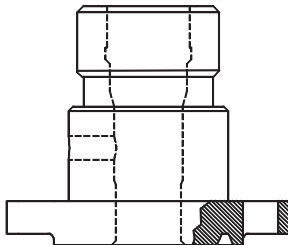


Model MH1100
Flareweld

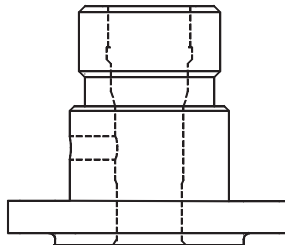


Model MH2100
Buttweld

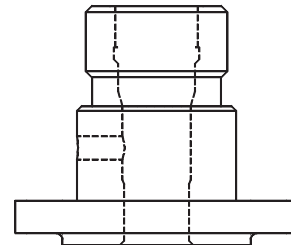
Model	1/4" T		1/2" T		3/4" T		1" T	
	Height (in)	Weight (lbs)	Height (in)	Weight (lbs)	Height (in)	Weight (lbs)	Height (in)	Weight (lbs)
MH1100 (Flareweld)	7.50	11	7.50	11	7.50	11	7.50	11
MH2100 (Buttweld)	7.50	11	7.50	11	7.50	11	7.50	11



Model MH5100
ANSI Flange RJ



Model MH6100
ANSI Flange RF



Model MH7100
API Flange

Model	2" Flange Size	1/4" T		1/2" T		3/4" T		1" T	
		Height (in)	Weight (lbs)	Height (in)	Weight (lbs)	Height (in)	Weight (lbs)	Height (in)	Weight (lbs)
MH5100 ANSI Flange RJ	150#	7.50	15	7.50	15	7.50	15	7.50	15
	300#	7.50	17	7.50	17	7.50	17	7.50	17
	4/600#	7.50	18	7.50	18	7.50	18	7.50	18
	9/1500#	7.50	31	7.50	31	7.50	31	7.50	31
	2500#	7.50	46	7.50	46	7.50	46	7.50	46
MH6100 ANSI Flange RF	150#	7.50	15	7.50	15	7.50	15	7.50	15
	300#	7.50	17	7.50	17	7.50	17	7.50	17
	4/600#	7.50	18	7.50	18	7.50	18	7.50	18
	9/1500#	7.50	31	7.50	31	7.50	31	7.50	31
	2500#	7.50	46	7.50	46	7.50	46	7.50	46
MH7100 API Flange	2000#	7.50	18	7.50	18	7.50	18	7.50	18
	3/5000#	7.50	31	7.50	31	7.50	31	7.50	31
	10000#	8.50	46	8.50	46	8.50	46	8.50	46

Temperature Rating: -20° F (-28.9° C) to +350° F (176.6° C)
Pressure Rating: 6000 PSI or as Flange Size