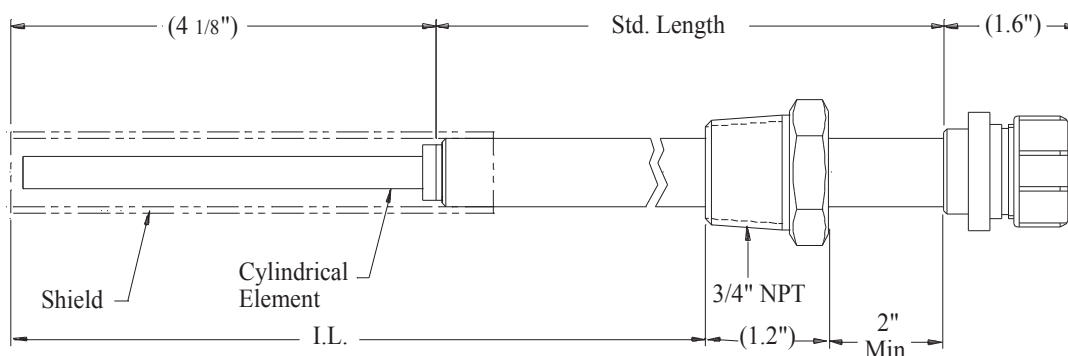


Model ER2100

Electrical Resistance Probe

Fixed Length with 3/4" NPT Pipe Plug and Cylindrical Element



Model ER2100 is a fixed-length, electrical resistance probe with a 3/4" NPT pipe plug. The probe requires process isolation or process shutdown to install and a threaded pipe fitting to mount. The all-welded construction allows the probe to be used in harsh environments. The probe assembly consists of an insertion rod with an element, a hermetically sealed connector, and a 3/4" NPT pipe plug, which are all welded in place. A velocity shield can be provided if required. The insertion length (I.L.) is calculated to the end of the shield or to the end of the element if a shield is not present. Probe length can be specified by the customer. For standard probes, the maximum insertion length is given in the chart below. Several standard elements are available to meet your specific needs.

Specifications:

Probe Body - 316 Stainless Steel

Element Seal - Welded

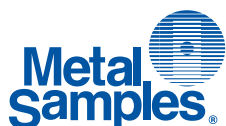
Fill Material - Ceramic

Temperature Rating - 500°F / 260°C

Pressure Rating - 3000 PSI / 204 Bar

Mounting - 3/4" NPT Pipe Plug

Std. Length	IL (max)
6"	7.38"
8"	9.38"
12"	13.38"
18"	19.38"



Metal Samples Company

A Division of Alabama Specialty Products, Inc.

152 Metal Samples Rd., Munford, AL 36268 Phone: (256) 358-4202 Fax: (256) 358-4515

E-mail: msc@alspi.com Internet: www.metalsamples.com

Houston Office: 6327 Teal Mist Lane, Fulshear, TX 77441 Phone: (832) 451-6825

ER2100 Ordering Information

Model								
ER2	Electrical Resistance Fixed Length Pipe Plug Probe							
	Pipe Plug Size							
	2	3/4" NPT Pipe Plug						
	3	1" NPT Pipe Plug						
	Probe Body Material							
	22	316						
	44	C276						
	ER Element Options							
	500	CT10 Cylindrical - 10 mil thickness (5 mil useful probe life)						
	600	CT20 Cylindrical - 20 mil thickness (10 mil useful probe life)						
	700	CT50 Cylindrical - 50 mil thickness (25 mil useful probe life)						
	Length							
	06	7.38 inches max. insertion length						
	08	9.38 inches max. insertion length						
	12	13.38 inches max. insertion length						
	18	19.38 inches max. insertion length						
	Element Alloy							
	XXX	Use Code in Alloy Chart						
	ER Probe Options							
	00	No shield						
	03	Shield						
	Insertion Length (I.L.)							
	-LLLL	Length in inches, stated in 2 decimal place format. Round calculated length down to the nearest 1/8". (Ex: 5 1/8" = 0512)						
ER2	2	22	500	08	375	03	-0512	Example of Probe Ordering #

For alloys, sizes, or other special requirements not listed, contact our sales department.

Alloy Chart					
Code	Description	UNS #	Code	Description	UNS #
375	Carbon Steel *	G10100	159	316L SS	S31603
538	5Cr 1/2Mo	K42544	A12	C276	N10276
541	9Cr 1Mo	K90941	602	Alloy 625	N06625
186	410 SS	S41000	419	CDA110	C11000
141	304 SS	S30400	434	CDA443	C44300

Note: Not all alloys are available with all element types and seals.

* Chemically equivalent to standard pipe-grade carbon steels.